



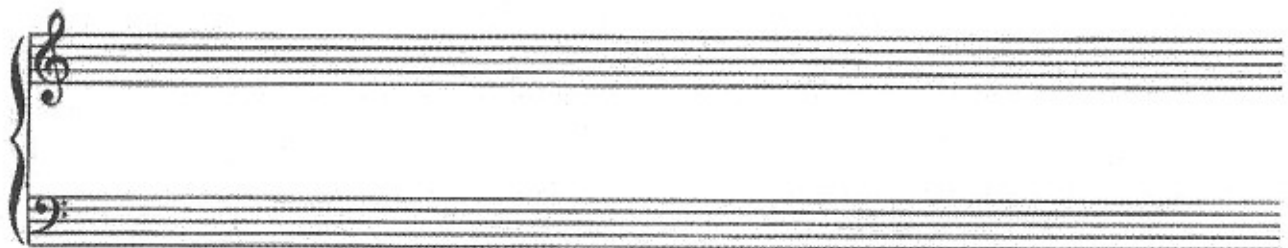
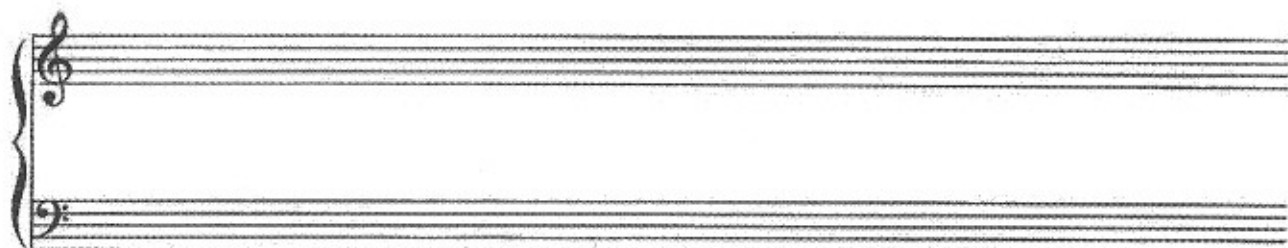
" Buddha " (Rose / Pollack)

as played by

Edward Elzeav Confrey ("zez")

on QRS piano roll # 1026 (1919-1920)

Transcribed by Frank L. Himprl



"Buddha" as played by Edward "Doc" Cortrey.

Transcribed by Frank L. Hempel

One-Step Tempo

* see below

Handwritten musical score for piano accompaniment. The score is in 2/4 time and consists of six systems of piano accompaniment. The first system includes the tempo marking "One-Step Tempo" and a dynamic marking "f". The score features various musical notations such as slurs, accents, and dynamic markings like "p" and "f". A circled letter "A" is present in the fourth system. The piece concludes with a triplet of eighth notes in the final measure of the sixth system.

* for proper effect, eighth notes must be played very smoothly and in exact time throughout this piece, ♩ = ♩

The image displays a handwritten musical score for piano, organized into six systems. Each system consists of a treble clef staff and a bass clef staff. The music is written in a key signature of two flats (B-flat and E-flat). The notation is fluid and includes various musical symbols such as notes, rests, and ornaments. The score is written in a fluid, handwritten style. The first system features a triplet in the treble staff. The second system has a dynamic marking of *f* in the bass staff. The third system includes a triplet in the treble staff and a dynamic marking of *f* in the bass staff. The fourth system has a dynamic marking of *f* in the bass staff. The fifth system has a dynamic marking of *f* in the bass staff. The sixth system has a dynamic marking of *f* in the bass staff. The score is written in a fluid, handwritten style.

This page contains six systems of handwritten musical notation for piano accompaniment. Each system consists of a treble clef staff and a bass clef staff. The notation includes various musical symbols such as notes, rests, slurs, and dynamic markings. Key features include:

- System 1:** Treble staff has a slur over the first two measures and an *8va* marking above the third measure. Bass staff has a slur over the first two measures.
- System 2:** Treble staff has a *lacr* marking above the first measure. Bass staff has a slur over the first two measures.
- System 3:** Treble staff has a slur over the first two measures. Bass staff has a slur over the first two measures.
- System 4:** Treble staff has a slur over the first two measures and a *3* marking below the first measure. Bass staff has a slur over the first two measures.
- System 5:** Treble staff has a slur over the first two measures and *(b)* markings above the third and fourth measures. Bass staff has a slur over the first two measures.
- System 6:** Treble staff has a slur over the first two measures and *8va* markings above the third and fourth measures. Bass staff has a slur over the first two measures.

8va

pp

(B) *agitato* - roll bass octaves in eighth notes

gradual cresc.

mf

grad. cresc.

grad. cresc.

cresc.

cresc.

8va

fff

8va

fff

Go to (A) and play to (B), then proceed:

ff

arco

pizz

-Sra

-Sra